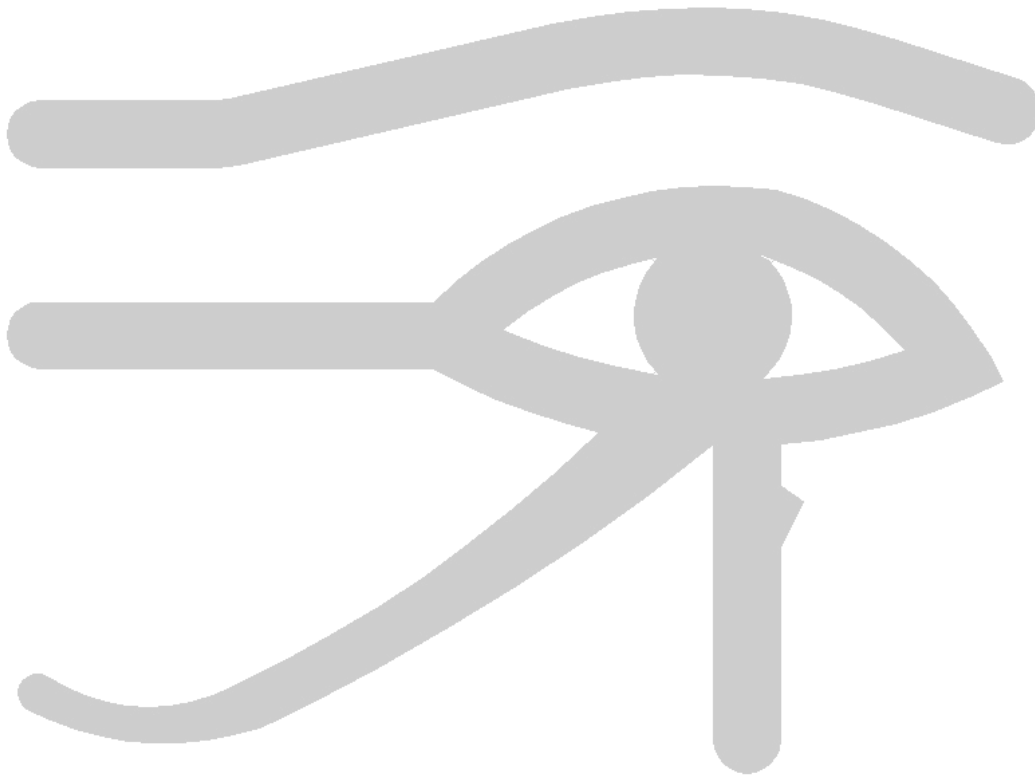




Standard Darbury Product Installation Document

Rev 1.3 – May 2014



Darbury Consulting Ltd.

Tel: +1 403 397 7724
E-mail: info@darbury.com



Installation Procedure

All of the Darbury products are installed the same way; this document will show examples from the Darbury COG – Centre of Gravity program. The www.darbury.com web site will have a link to the installation MSI file contained within the right hand pane of the relevant product page as follows:

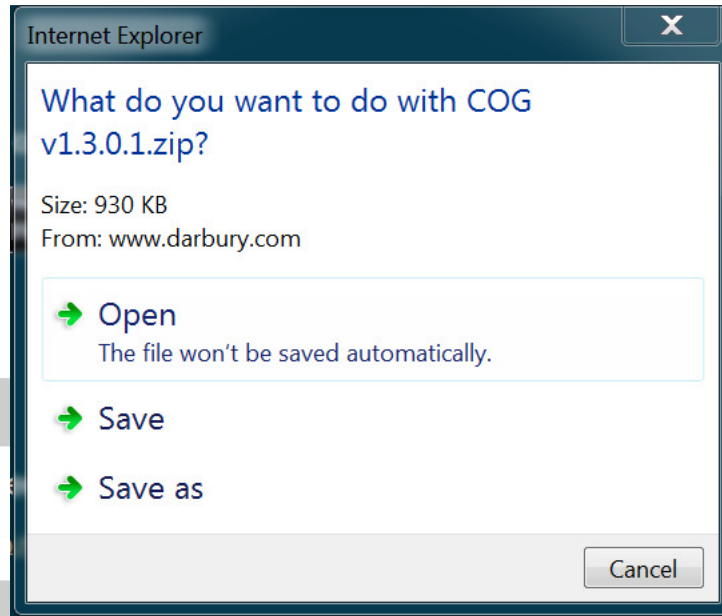
The screenshot shows the Darbury website's product page. At the top left is the Darbury logo. To the right are links for 'Blog', 'Partnerships', and 'About'. The main heading is 'Darbury Software Products' with a sub-heading 'PRODUCTS FOR SALE'. Below this, a paragraph states: 'The following Darbury Consulting products for sale with the prices being competitive in the market place.' A small image of the software interface is shown next to the title 'Darbury COG - Centre of Gravity Calculations'. The description reads: 'This program will work out simple 3D centre of gravity calculations based on user's input for load & positions on a rectangular surface, whether it be a steel baseframe for a packaged skid or a pallet.' Under the heading 'COG Installation Download (PC)', there is a list of links: 'Darbury COG Installation' (circled in red) and 'Darbury Installation Document'. Below that is the 'COG Installation Download (iOS)' section with a 'Download on the App Store' button. The 'Help' section contains links for 'Help (PC)' and 'Help (iOS)'. Finally, the 'Product Information Sheets' section has a link for 'Darbury COG (Centre of Gravity) Program'.

Click the link to start the installation process. At this point, a dialog box will be displayed to allow the user either to continue with the installation by using the “Run” option, or to “Save” the installation setup file to the hard disc.

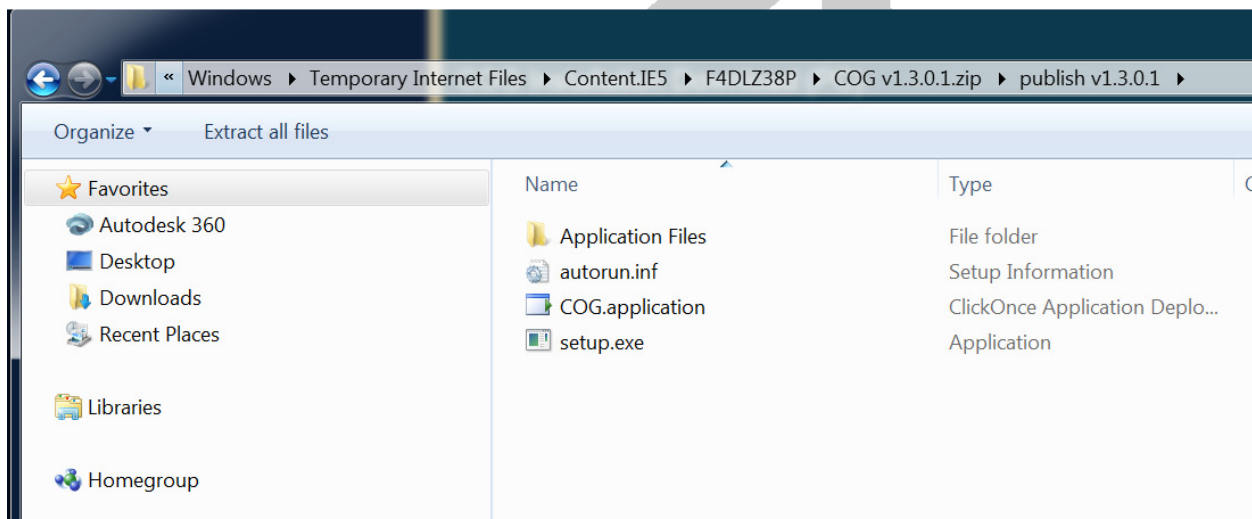
The following instructions are based on the Darbury “COG – Centre of Gravity” calculation program; the particular product being installed will have exactly the same installation procedure, but will have the name of the particular program at the top of each of the screens.



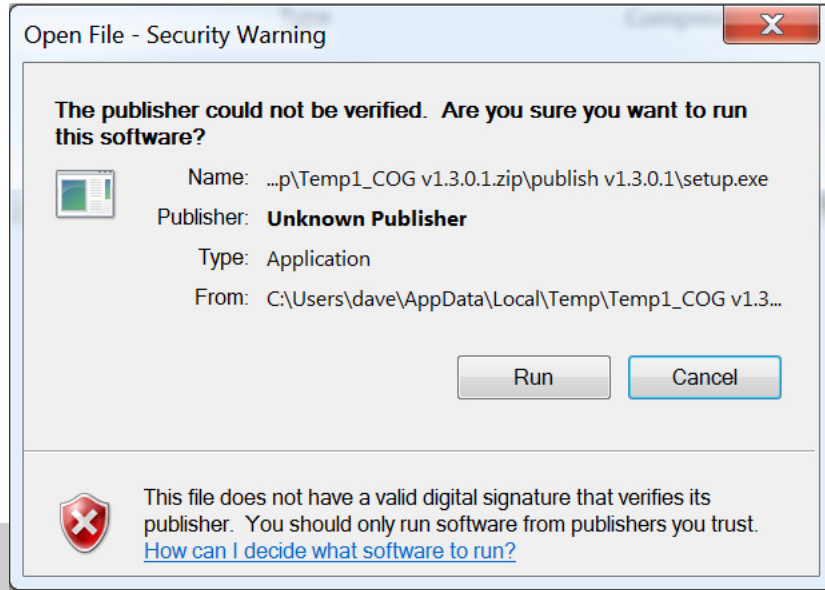
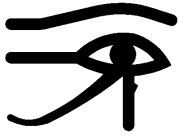
Click on the link to perform the install. When the dialog box comes up, press the “open” button to start the process (this assumes that Internet Explorer is being used as the browser):



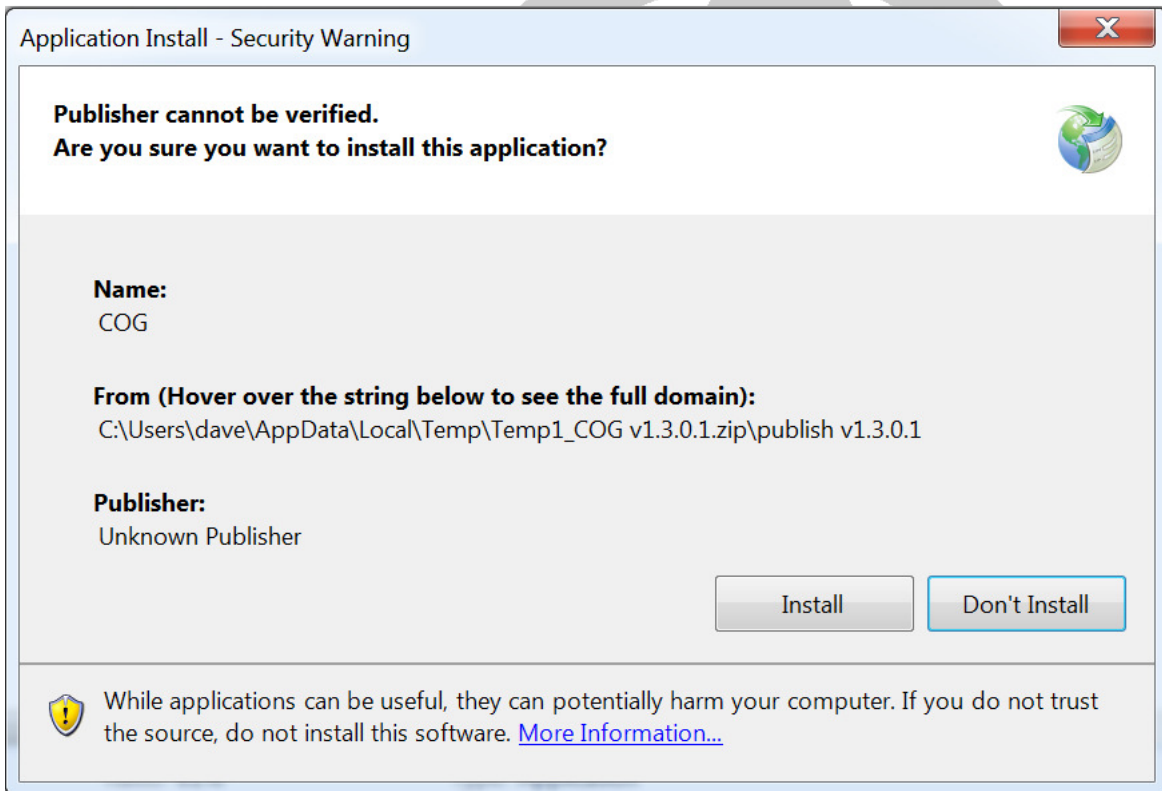
The ZIP file will be downloaded to the temporary area as specified in the “Path” statement & the directory will be shown as follows:



Double-click the “setup.exe” file to start the installation process. When the “Open File – Security Warning” dialog box is shown, select the “Run” button:



The final dialog box allows the routine to be installed by pressing the “Install” button






Once the installation has completed, a new icon will exist on the desktop. In some windows versions, the routine will be run as soon as the installation is complete. To run the program at a later stage, double click the new icon on the desktop, or it can be run from “Start > Darbury > (routine name)”.

Registration Procedure

All Darbury products are registered in exactly the same way, as follows:

When the user runs the program for the first time, the application will recognise that the installation is new & will show the following registration screen:

New Client Information

 **Darbury Consulting Ltd.**
www.darbury.com

This program will run 5 times as a free license. Please ensure that you are connected to the internet, complete all of the information below & press 'OK' to enable the free trial period

First Name:

Last Name:

E-mail Address:

Company Name:

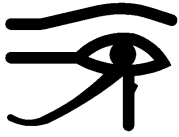
Country:

Register

The user enters the complete information & presses the “Register” button.

This information will then unlock the trial licenses allowing 5 separate runs of the routine. Upon the 6th run of the program, a message box will display requesting the user to contact Darbury & purchase the permanent license. Upon payment clearing or corporation invoice, the permanent license will be released to the user.

When a license needs to be removed, or transferred to another computer, Darbury will have to be notified at the info@darbury.com e-mail address. This license system does not permit the transfer of licenses from one



computer to another, so the program will have to be decommissioned on the initial computer & re-licensed for the next installation.

Error Logging & Issue Support

Should there be a need to log a problem, please submit an E-mail to the info@darbury.com address. Please identify the following information:

- Your name & contact details
- Your company
- The error produced
- Operating system
- A reproducible step list so that Darbury can replicate the problem.

For any other issue or for logging a suggestion to improve the program, please use the same address & be as explicit as possible. Someone from Darbury will return e-mail you to discuss the requirement so that it is fully understood.

